

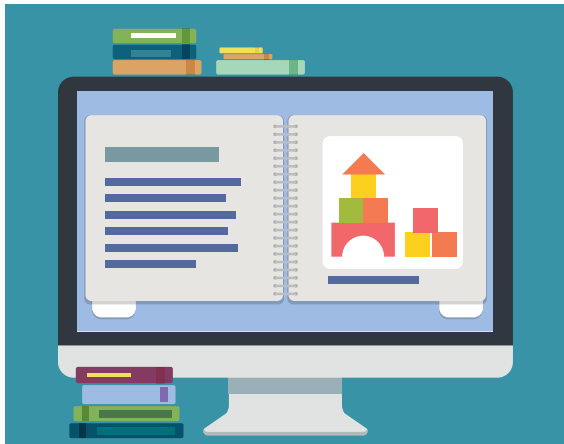
## Penn State Better Kid Care On Demand

### Better Kid Care is excited to launch our new Customized Learning Module (CLM) initiative!

Organizations and agencies can work with our team of ECE and youth development professionals and learning design experts to design and deliver customized professional development that meets the needs of your learners. You may have CCDBG funds to develop modules on farm to ECE, infant-toddler care, physical activity, family engagement, or other identified needs for professional development in your state.

Penn State Extension Better Kid Care (BKC) program has a proven history of delivering high-quality professional development to early care and education and youth development professionals. BKC launched an online asynchronous learning platform in 2011 and has enrolled more than 310,000 learners who have completed more than one million learning modules.

### Features of our online module development and delivery include:



**Quick turnaround:** BKC can launch a module within several months of receiving or developing content.

**Low cost:** Fees vary depending on content, video, and resource production.

**Video exemplars:** BKC modules demonstrate best practices using authentic video in ECE and out-of-school time settings. Interviews with experts and experienced ECE practitioners allow for application of research to practice.

**Reporting:** BKC provides summary module completion reports to organizations and agency leads on a monthly basis. BKC can upload or provide a file of individual

module completions if a registry ID is provided. No fee is charged for reporting.

**Evaluation:** BKC collects post-module evaluation data on all learning modules. Evaluation reports indicate that participant knowledge gained and intent to apply learning-to-practice had mean scores of 3.3 or higher on a scale (1=low to 4=high) for each module.

**Alignment with standards:** BKC can align customized modules with state early learning standards. Also, an alignment of existing BKC modules with ERS and CLASS® is available on request.

Contact us to discuss how Better Kid Care can help you meet your professional development needs. Call Chris at 800-452-9108 or email at [cx8@psu.edu](mailto:cx8@psu.edu)

Each module developed by Better Kid Care uses the Know, See, Do, Improve (KSDI) Framework:



KNOW



SEE



DO



IMPROVE

### Know

- The module articulates measurable learning objectives
- Learning objectives identify competencies to be demonstrated
- Content is based on evidence-based and promising practice recommendations

### See

- The module includes best practice examples of content being delivered through the use of multiple media (video, graphics, resource handouts)
- Best practice examples take place in settings related to the targeted audience for the module (e.g., center, home, group)

### Do

- Module includes opportunities to apply learning to practice, including action planning

### Improve

- Assessment includes self-reflection so that participants may identify their own learning
- Multiple ways for participants to demonstrate competency (discussion with director, observation, presentation, journal reflection, portfolio or other)

## Explore existing modules for your learners

BKC may already have modules developed to meet your training needs. Contact us about pre-purchasing modules for your learners. We can also add state or organization-specific content to an existing module to create a new module. Here's a brief highlight of our 200+ modules!

- Health and Safety Basics (6 hrs.)
- Taking Steps to Healthy Success (7 modules related to healthy eating and physical activity (HEPA))
- Foundations of Child Development
- CDA 120 hr. Course
- Series of modules for home-based providers
- New Staff Orientation (infant/toddler, preschool, school-age modules)
- Adverse Childhood Experiences
- Understanding Poverty
- Food Safety
- Food Allergy Management in Child Care
- A Good Night's Sleep: How Sleep Affects Health
- Adventurous Play
- CLAD-Cultural, Linguistic and Ability Diversity
- Dual Language Learners: Strategies for Successful Opportunities in ECE
- Developmentally Appropriate Practice (DAP): An Introduction
- Positive Youth Development Series (5 for youth staff and 5 for program administrators)
- Click2Science (20 modules to help facilitate STEM learning)
- Infant-Toddler Care Series (11 modules)
- Preschool Foundations (5 modules)
- And more!